

LETTER TO THE EDITOR

## ***Herschel* observations of EXtra-Ordinary Sources (HEXOS): The present and future of spectral surveys with *Herschel*/HIFI<sup>★,★★</sup>**

E. A. Bergin<sup>1</sup>, T. G. Phillips<sup>2</sup>, C. Comito<sup>3</sup>, N. R. Crockett<sup>1</sup>, D. C. Lis<sup>2</sup>, P. Schilke<sup>3,4</sup>, S. Wang<sup>1</sup>, T. A. Bell<sup>2</sup>, G. A. Blake<sup>5</sup>, B. Bumble<sup>6</sup>, E. Caux<sup>7,8</sup>, S. Cabrit<sup>9</sup>, C. Ceccarelli<sup>10</sup>, J. Cernicharo<sup>11</sup>, F. Daniel<sup>11,12</sup>, Th. de Graauw<sup>13</sup>, M.-L. Dubernet<sup>14,15</sup>, M. Emprechtinger<sup>2</sup>, P. Encrenaz<sup>12</sup>, E. Falgarone<sup>12</sup>, M. Gerin<sup>12</sup>, T. F. Giesen<sup>4</sup>, J. R. Goicoechea<sup>11</sup>, P. F. Goldsmith<sup>6</sup>, H. Gupta<sup>6</sup>, P. Hartogh<sup>16</sup>, F. P. Helmich<sup>13</sup>, E. Herbst<sup>17</sup>, C. Joblin<sup>7,8</sup>, D. Johnstone<sup>18</sup>, J. H. Kawamura<sup>6</sup>, W. D. Langer<sup>6</sup>, W. B. Latter<sup>19</sup>, S. D. Lord<sup>19</sup>, S. Maret<sup>10</sup>, P. G. Martin<sup>20</sup>, G. J. Melnick<sup>21</sup>, K. M. Menten<sup>3</sup>, P. Morris<sup>19</sup>, H. S. P. Müller<sup>4</sup>, J. A. Murphy<sup>22</sup>, D. A. Neufeld<sup>23</sup>, V. Ossenkopf<sup>4,13</sup>, L. Pagani<sup>9</sup>, J. C. Pearson<sup>6</sup>, M. Péroullet<sup>12</sup>, R. Plume<sup>24</sup>, P. Roelfsema<sup>13</sup>, S.-L. Qin<sup>4</sup>, M. Salez<sup>9</sup>, S. Schlemmer<sup>4</sup>, J. Stutzki<sup>4</sup>, A. G. G. M. Tielens<sup>25</sup>, N. Trappe<sup>22</sup>, F. F. S. van der Tak<sup>13</sup>, C. Vastel<sup>7,8</sup>, H. W. Yorke<sup>6</sup>, S. Yu<sup>6</sup>, and J. Zmuidzinas<sup>2</sup>

(Affiliations are available on page 5 of the online edition)

Received 28 May 2010 / Accepted 30 June 2010

### ABSTRACT

We present initial results from the *Herschel* GT key program: *Herschel* observations of EXtra-Ordinary Sources (HEXOS) and outline the promise and potential of spectral surveys with *Herschel*/HIFI. The HIFI instrument offers unprecedented sensitivity, as well as continuous spectral coverage across the gaps imposed by the atmosphere, opening up a largely unexplored wavelength regime to high-resolution spectroscopy. We show the spectrum of Orion KL between 480 and 560 GHz and from 1.06 to 1.115 THz. From these data, we confirm that HIFI separately measures the dust continuum and spectrally resolves emission lines in Orion KL. Based on this capability we demonstrate that the line contribution to the broad-band continuum in this molecule-rich source is ~20–40% below 1 THz and declines to a few percent at higher frequencies. We also tentatively identify multiple transitions of HD<sup>18</sup>O in the spectra. The first detection of this rare isotopologue in the interstellar medium suggests that HDO emission is optically thick in the Orion hot core with HDO/H<sub>2</sub>O ~ 0.02. We discuss the implications of this detection for the water D/H ratio in hot cores.

**Key words.** ISM: abundances – ISM: molecules – submillimeter: ISM

### 1. Introduction

Massive star-forming regions are characterized by a rich molecular emission spectrum (e.g. Herbst & van Dishoeck 2009). One profitable method of exploring gas physics and chemistry has been to survey the spectrum within the mm/sub-mm atmospheric windows. This allows for an unbiased look at the chemical composition and, via the multitude of detected lines, for inferring physical parameters such as the temperature and density. Of particular note in this regard are the Orion and Sgr B2 star-forming regions. The hot cores (Orion KL, Sgr B2 N + M) within these two clouds have been the subject of intense scrutiny with numerous spectral surveys revealing a spectrum dominated by organic molecules (Blake et al. 1987; Nummelin et al. 2000; Comito et al. 2005; Persson et al. 2007). For a complete reference list, see Tercero et al. (2010) and Belloche et al. (2009). Such observations have illustrated the rich chemical complexity that is attributed to grain surface reactions, which is revealed as the newly formed star heats the dust and releases frozen ices (Ehrenfreund & Charnley 2000; Herbst & van Dishoeck 2009).

Surveying large regions of spectrum with near uniform sensitivity comes at a cost in telescope time owing to overheads induced by limited bandwidth, receiver tuning, calibration errors induced by atmospheric variations, relative calibration accuracy between bands, and changes in the pointing. For the next several years, this will change with the opportunity provided by the *Herschel*/HIFI instrument. HIFI has a built in mode to rapidly scan large portions of the spectrum with the high sensitivity provided by a space-based platform. In addition, HIFI opens a large portion of the sub-mm/far-IR spectrum (158–610  $\mu$ m) for high-resolution ( $\lambda/\Delta\lambda > 10^6$ ) spectroscopy. This is crucial for uncharted spectral territory, but also for detecting the lines of H<sub>2</sub>O, a key molecular constituent.

We present here some initial results from the HIFI spectral scans of Orion KL obtained as part of the *Herschel* guaranteed time key program, *Herschel* observations of EXtra-Ordinary Sources (HEXOS). The aim of this paper is not only to outline the goals and sample results from one particular *Herschel* key program, but also to highlight the tremendous utility of *Herschel*/HIFI for rapidly obtaining high-resolution spectra in a rich region of the electromagnetic spectrum. In Sect. 2 we discuss HEXOS goals and methodology. In Sect. 3 we show some of the first spectral scans, demonstrate the ability of HIFI to resolve the dust continuum, and comment on the observed line-to-continuum ratio in the far infrared. In Sect. 4 we present one of the unexpected results from an unbiased spectral view in the detection of HD<sup>18</sup>O in the Orion KL hot core.

\* *Herschel* is an ESA space observatory with science instruments provided by European-led Principal Investigator consortia and with important participation from NASA.

\*\* Figure 2 (page 6) is also available in electronic form at <http://www.aanda.org>

## 2. HIFI spectral surveys and HEXOS

The observations discussed here are part of the HEXOS guaranteed-time key program on the *Herschel* satellite. The HEXOS observational program consists primarily of complete HIFI spectral scans of Orion KL, Sgr B2 (N), Sgr B2 (M), Orion S, and the Orion Bar. This is supplemented by a number of deep integrations and small maps. The broad goals of the HEXOS program are to (1) define the submillimeter spectrum of dense warm molecular gas; (2) provide a near complete chemical assay and cooling census of star-forming gas in a variety of environments; (3) explore the physical perspective offered by observations of hundreds of lines of a single molecule; (4) use the high excitation lines to probe the chemical and physical state of gas in close proximity to the newly formed massive star(s); and (5) search the spectrum for new molecular constituents and potentially identify the bending transitions of polycyclic aromatic hydrocarbons.

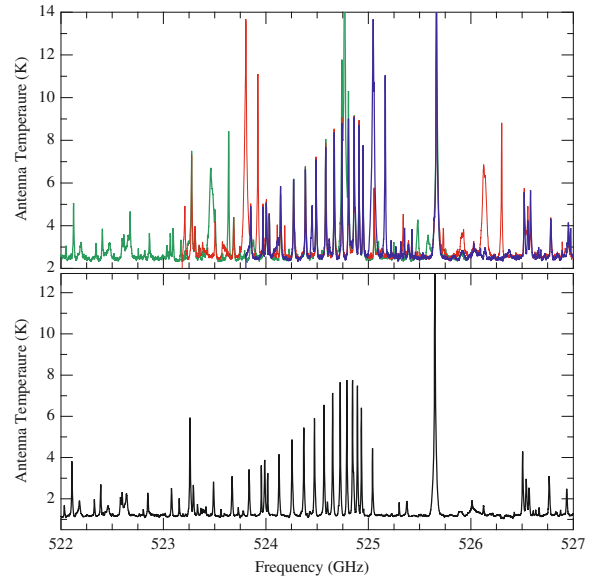
It is important to note that the stable thermal space-based environment and fast tuning of *Herschel*/HIFI is crucial for achieving these goals. The specifics of the HIFI instrument have been discussed by [de Graauw et al. \(2010\)](#) and the *Herschel* Space Observatory by [Pilbratt et al. \(2010\)](#). The principle adopted to plan a spectral scan for HEXOS is to achieve a uniform coverage in source-intrinsic terms. That is, we adopted a source intrinsic desired rms and a source size (determined by interferometric observations) and then calculated the goal rms for HIFI taking the source coupling to the main beam of the telescope into account. Likewise, we estimated all sensitivities with a fixed resolution in velocity ( $1 \text{ km s}^{-1}$  in this instance). Based on this the spectral scan of Orion KL from  $\sim 480$  GHz to 1900 GHz (with some gaps) took  $\sim 45$  h (including two separate pointings in bands 6 and 7). For reference, to cover 40 GHz with comparable spectral resolution at the Caltech Submillimeter Observatory (CSO) to 30 mK rms required  $\sim 36$  h (Widicus-Weaver, priv. comm.). The CSO data has higher spatial resolution (at comparable frequencies), but this comparison illustrates that HIFI samples a vast region of the spectrum at comparable sensitivity with a substantial reduction in telescope time.

A full HIFI spectral scan ultimately covers  $>1000$  GHz with  $\sim 1$  MHz spectral resolution obtained by the same instrument, minimizing relative calibration uncertainties. This enables a direct comparison of lines spanning a wide range of frequencies and opens the capability for exploring an extensive range of topics, such as those addressed by the selection of papers in this A&A special feature.

## 3. Observations

The HIFI observations were obtained in March and April 2010 using the dual beam-switch (DBS) mode pointed towards the Orion hot core at  $\alpha_{J2000} = 5^{\text{h}}35^{\text{m}}14.3^{\text{s}}$  and  $\delta_{J2000} = -5^{\circ}22'36.7''$ . We used the normal chop setting for the SiS bands and fast chop for the HEB bands with reference beams approximately  $3'$  east and west. The wide band spectrometer provides a spectral resolution of 1.1 MHz over a 4 GHz IF bandwidth. The data were reduced using HIPE pipeline version 2.4 and are calibrated to  $T_{\text{A}}^*$  scale. The velocity calibration of HIFI data is good to  $\sim 0.5 \text{ km s}^{-1}$ .

HIFI operates as a double sideband system where, in the conversion to frequencies detectable by the spectrometers, spectral features in the opposite sideband appear superposed at a single frequency. As part of the spectral scan observation, different settings of the local oscillator (LO) are observed and the double sideband is deconvolved to isolate the observed sideband



**Fig. 1.** Illustration of the double sideband deconvolution within a section of the band 1a scan obtained with a redundancy of 4. *Top*: three different LO settings shown with separate colors. Lines in the other sideband move at the different LO settings. *Bottom*: single sideband spectrum after the deconvolution. The obvious band in the spectrum is a Q-branch of methanol ( $J_{-4,0} - J_{-3,0}\text{E}$ ;  $J = 10-25$ ), which is discussed by [Wang et al. \(2010\)](#).

([Comito & Schilke 2002](#)). The number of LO settings covering a given frequency is labeled as the redundancy. For line-rich sources, based upon simulations, we estimate that a redundancy of  $>4$  provides the needed fidelity for deconvolution. We applied the standard HIFI deconvolution using the *doDeconvolution* task within HIPE. In [Fig. 1](#) we illustrate this method by presenting a Band 1a spectrum obtained with 3 (out of 4) of the LO settings within a reduced frequency range and the final SSB spectrum.

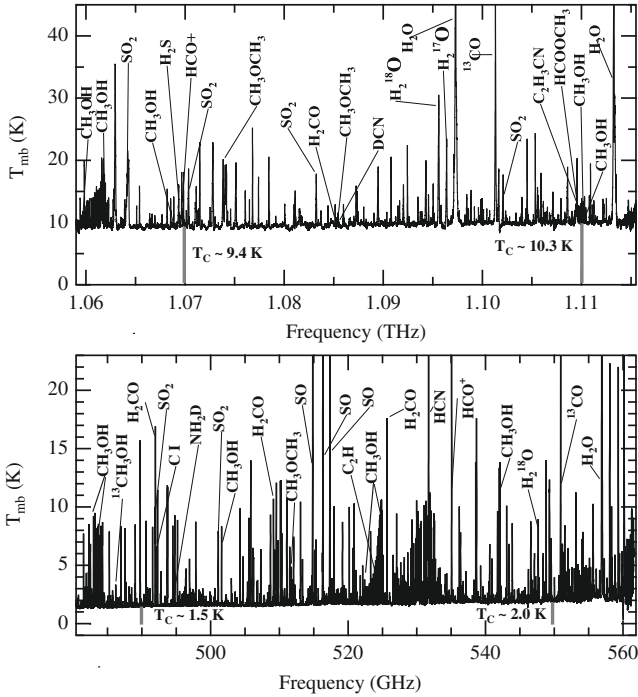
We present here the single sideband data of Band 1a (480–560 GHz) and 4b (1.06–1.115 THz) obtained as part of the *Herschel* science demonstration phase; however we use data from the other bands in our discussion of  $\text{HD}^{18}\text{O}$ . The survey spectra are shown in [Fig. 2](#) and have an angular resolution of  $\theta_{1a} \sim 40''$  and  $\theta_{4b} \sim 20''$ . A blow up of a region of the spectrum in 1a is shown in [Fig. 1](#), which illustrates the fidelity of the data. The rms in the center of band 1a is 20 mK and 67 mK in 4b, obtained using a velocity resolution of  $1 \text{ km s}^{-1}$  and  $\eta_{\text{mb}} = 0.7$ .

## 4. Results

The spectral scans present a fantastic *Herschel* legacy but also a daunting data product with tens of thousands of lines seen above the noise. Here we isolate two areas for initial focus: the line-to-continuum ratio in Orion KL as a function of frequency and the D/H ratio of water in Orion KL.

### 4.1. Dust emission and the line-to-continuum ratio

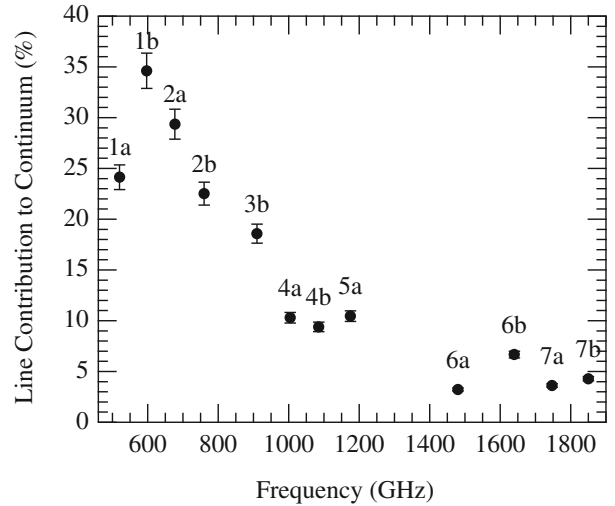
The HIFI spectral scans obtained with DBS mode detect both continuum and line emission. In the Orion (and Sgr B2) data, we see evidence of a rise in the continuum within a given subband (see [Fig. 2](#)). The continuum is detected even in the slow (0.125 Hz) chop setting used for bands 1–5. In [Fig. 2](#) the continuum is  $\sim 1.7$  K at 520 GHz and  $\sim 10$  K at 1.1 THz. This represents a measurement of the continuum flux towards Orion without line contamination; however the telescope beam, and



**Fig. 2.** *Top:* HIFI spectral scan of Orion KL in Band 4b. *Bottom:* HIFI spectral scan of Orion KL in Band 1a. Strong lines in both spectra are identified. At the bottom of each panel we give the continuum level seen in the data at the ends of the bands. For line identification we made use of the myXCLASS program (<http://www.astro.uni-koeln.de/projects/schilke/XCLASS>) which accesses the CDMS (Müller et al. 2001, 2005, <http://www.cdms.de>) and JPL (Pickett et al. 1998, <http://spec.jpl.nasa.gov>) molecular data bases for line assignment.

hence beam-source coupling, is changing with frequency, which complicates direct continuum analysis. Sutton et al. (1984) and Groesbeck (1995) estimate that the contamination due to line flux at 230 GHz and 330 GHz is roughly  $\sim 50\%$ . In Fig. 3 we provide an estimate of the line contribution to the continuum derived from the available HIFI data. These values were estimated by averaging the flux within a given band, including the line contribution and the continuum rise and by dividing by the continuum strength in the band center. If Orion KL is representative of other more distant massive star-forming cores, then lines may contribute up to  $\sim 20\text{--}40\%$  of the continuum below 1 THz. Above 1 THz the line contamination sharply decreases owing to rising continuum and decreasing line emission (see Crockett et al. 2010).

Given this estimate of the line contribution, we can test how well HIFI measures the dust continuum in DBS mode by comparison to ground-based measurements. Assuming an aperture efficiency of 0.70, we estimate a flux of  $\sim 680$  Jy at 550 GHz and 4100 Jy at 1.1 THz. The measured total flux (including lines) in bands 1a and 4b is 840 Jy and 4350 Jy, respectively. The flux comparison is more reliable at 520 GHz where we can convolve the ground-based data to a comparable beam size and extrapolate over a narrower range in frequency, assuming that the flux scales as  $\nu^{3.5}$  (Lis et al. 1998; Dicker et al. 2009). Using the 350  $\mu\text{m}$  SHARC map of OMC-1 (Lis et al. 1998), convolved to a *Herschel* beam of  $36''$  we estimate the flux towards Orion KL to be 5250 Jy. Thus the flux at 577  $\mu\text{m}$  (520 GHz) is  $\sim 912$  Jy. This is comparable to the HIFI measurement and within the errors of the flux scaling. Another consistency check regarding the



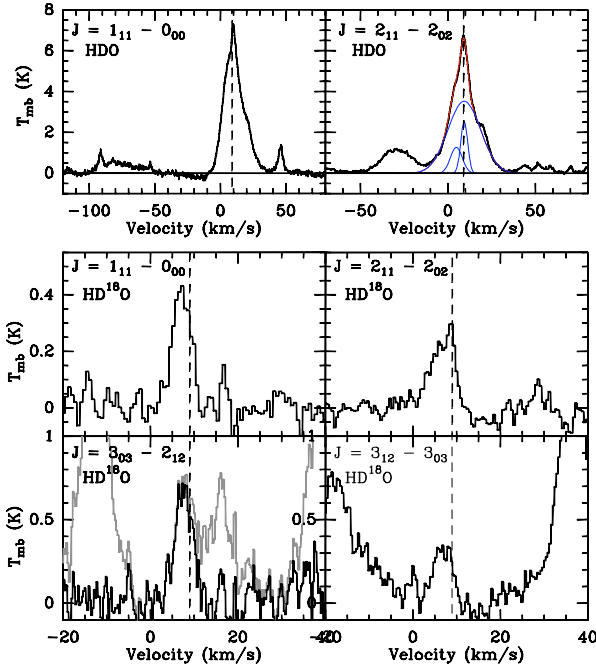
**Fig. 3.** Percentage of the continuum flux contributed by line emission (line + continuum/continuum) in each of the observed HIFI bands (1a, 1b, 2a, 2b, 3a, 3b, 4a, 4b, 5a, 6a, 6b, 7a, 7b) towards Orion KL. We assume a 5% relative error on the determination which is shown as the error bars.

HIFI continuum measurement is found in the detection of optically thick water lines towards Sgr B2 (see Lis et al. 2010).

#### 4.2. Detection of $\text{HD}^{18}\text{O}$ in the Orion hot core

It is well known that hot cores have enhanced levels of  $\text{HDO}/\text{H}_2\text{O}$  (Jacq et al. 1990; Gensheimer et al. 1996). Deuterium fractionation is inefficient at the high temperatures ( $T \sim 100\text{--}200$  K) characteristic of the hot cores (Millar et al. 1989), and these enhancements are believed to be fossil remnants imprinted in ices during earlier colder phases. In the case of Orion KL and other hot cores, the water column is estimated from the  $3_{13}\text{--}2_{20}$  transition of  $\text{H}_2^{18}\text{O}$  and various HDO transitions, which can be observed from the ground (Phillips et al. 1978; Jacq et al. 1988, 1990). The interpretation of  $\text{H}_2^{18}\text{O}$  emission is somewhat complicated by the lack of other transitions and by the fact that the  $3_{13}\text{--}2_{20}$  transition is blended with an  $\text{SO}_2$  line in galactic hot cores (in sources with smaller line widths, the lines can be separated, e.g. van der Tak et al. 2006). In the case of HDO, the low-energy lines in Orion KL seen in ground based spectra are quite strong ( $T_{\text{mb}} \sim 40\text{--}60$  K) when correcting for the source size of  $\sim 10''$  (Jacq et al. 1990). Given temperatures of  $100\text{--}200$  K, it is possible, or even likely, that these lines are optically thick. In fact Pardo et al. (2001) detected the  $2_{12}\text{--}1_{1,1}$  and  $1_{11}\text{--}0_{00}$  transitions and found that the hot core emission in these lines is obscured by emission from the other spatial/velocity components seen towards this line of sight (e.g. the outflow or plateau, Blake et al. 1987; Persson et al. 2007).

Unbiased spectral scans offer the opportunity for unexpected discoveries. One such example is the detection of multiple transitions of weak  $\text{HD}^{18}\text{O}$  emission in the Orion hot core. A sample of the detected transitions is shown in Fig. 4, along with two transitions of HDO. The  $2_{12}\text{--}2_{02}$  transition of HDO shows the distinctive shape of HDO lines in Orion with at least three spatial/velocity components visible in the spectrum (see also Melnick et al. 2010). The Orion KL spectrum is at or near the line confusion limit and, as such, it is a question of whether these weak lines can be reliably assigned as  $\text{HD}^{18}\text{O}$ . As can be seen in Fig. 4, and listed in Table 1, the lines all are centered near  $7\text{--}8$   $\text{km s}^{-1}$  with a similar width. In addition, it is likely that the HDO emission is optically thick. This is borne out in the ground



**Fig. 4.** *Top 2 panels:* selected transitions of HDO detected in HEXOS scans of Orion KL. The panel for HDO  $2_{11} - 2_{02}$  shows the typical fit with 3 spatial velocity components. The narrow component is centered on  $9 \text{ km s}^{-1}$  and is associated with the compact ridge, the very broad component is the plateau, and the hot core is at  $5\text{--}6 \text{ km s}^{-1}$ . *Lower 4 panels:* spectra of 4 transitions of HD $^{18}\text{O}$ . All data are shown on the  $T_{\text{mb}}$  scale. The  $3_{03} - 2_{12}$  transition of HD $^{18}\text{O}$  is blended with another line. We show the original spectrum in grey and the unblended isolation of the HD $^{18}\text{O}$  emission as the dark line.

state HDO  $1_{11} - 0_{00}$  spectrum, which has a strongly absorbed blue wing that hints at absorption below the continuum. This is reminiscent of the spectrum of optically thick ground-state  $\text{H}_2^{18}\text{O}$  lines detected by *Herschel* (Melnick et al. 2010). Finally, excitation models show that the detected transitions of HD $^{18}\text{O}$  are the strongest lines (that are not blended with other transitions in our data). Thus we tentatively assign these features to HD $^{18}\text{O}$  in Orion KL.

The detected lines are relatively broad ( $\Delta v \sim 5\text{--}6 \text{ km s}^{-1}$ ) with an observed line center velocity of  $\sim 7 \text{ km s}^{-1}$ , which is in between the expected velocity of the compact ridge of  $9 \text{ km s}^{-1}$  and hot core of  $5\text{--}6 \text{ km s}^{-1}$  (see Persson et al. 2007). Similarly they are too narrow for the outflow component. To examine this question we used HDO emission spectra (see top panel in Fig. 4) to fix the expected line parameters for HD $^{18}\text{O}$  and explore which component dominates the emission. In this fashion, we estimate that typically 60–80% of the HD $^{18}\text{O}$  emission arises in the hot core, and assign the detections to that component. The remainder ( $\sim 20\text{--}40\%$ ) could be attributed to the compact ridge, or blends from other interfering lines for some transitions.

Melnick et al. (2010) analyze the numerous  $\text{H}_2\text{O}$  and  $\text{H}_2^{18}\text{O}$  lines detected by *Herschel*/HIFI in Orion KL. They derive a total  $\text{H}_2^{18}\text{O}$  column of  $N(\text{o+p H}_2^{18}\text{O}) = 0.5\text{--}2 \times 10^{16} \text{ cm}^{-2}$  with a source size of  $8''$ . This assumes  $n(\text{H}_2) = 1 \times 10^7 \text{ cm}^{-3}$  and  $T = 150 \text{ K}$ . In addition, the water emission has a significant contribution from radiative excitation. An LTE analysis of the HD $^{18}\text{O}$  emission with these parameters gives a total column of  $N(\text{HD}^{18}\text{O}) = 1.6 \times 10^{14} \text{ cm}^{-2}$ . We consider this uncertain, since we assume LTE, do not account for radiative excitation, and attribute the emission solely to the hot core. Thus the D/H ratio of water in the hot core is  $\sim 0.02$ . This limit is significantly higher

**Table 1.** HD $^{18}\text{O}$  line parameters.

| $\nu$ (GHz)          | Transition        | $\int T_{\text{mb}} d\nu$<br>(K km s $^{-1}$ ) | $v$<br>(km s $^{-1}$ ) | $\Delta v$<br>(km s $^{-1}$ ) |
|----------------------|-------------------|--|------------------------|-------------------------------|
| 592.402              | $2_{11} - 2_{02}$ | 1.7 (0.1)                                      | 7.1 (0.1)              | 6.4 (1.2)                     |
| 746.476              | $3_{12} - 3_{03}$ | 2.9 (0.2)                                      | 6.7 (0.2)              | 6.3 (0.3)                     |
| 883.189              | $1_{11} - 0_{00}$ | 2.1 (0.1)                                      | 7.1 (0.1)              | 4.9 (0.3)                     |
| 994.347 <sup>a</sup> | $3_{03} - 2_{12}$ | 3.2 (0.2)                                      | 7.9 (0.2)              | 4.7 (0.3)                     |

**Notes.** Two other transitions ( $2_{11} - 1_{10}$ ,  $2_{02} - 1_{11}$ ) might be present, but are not listed due to significant line blending. <sup>(a)</sup> Blended with unidentified line; emission clearly isolated using Gaussian fits (e.g. Fig. 4).

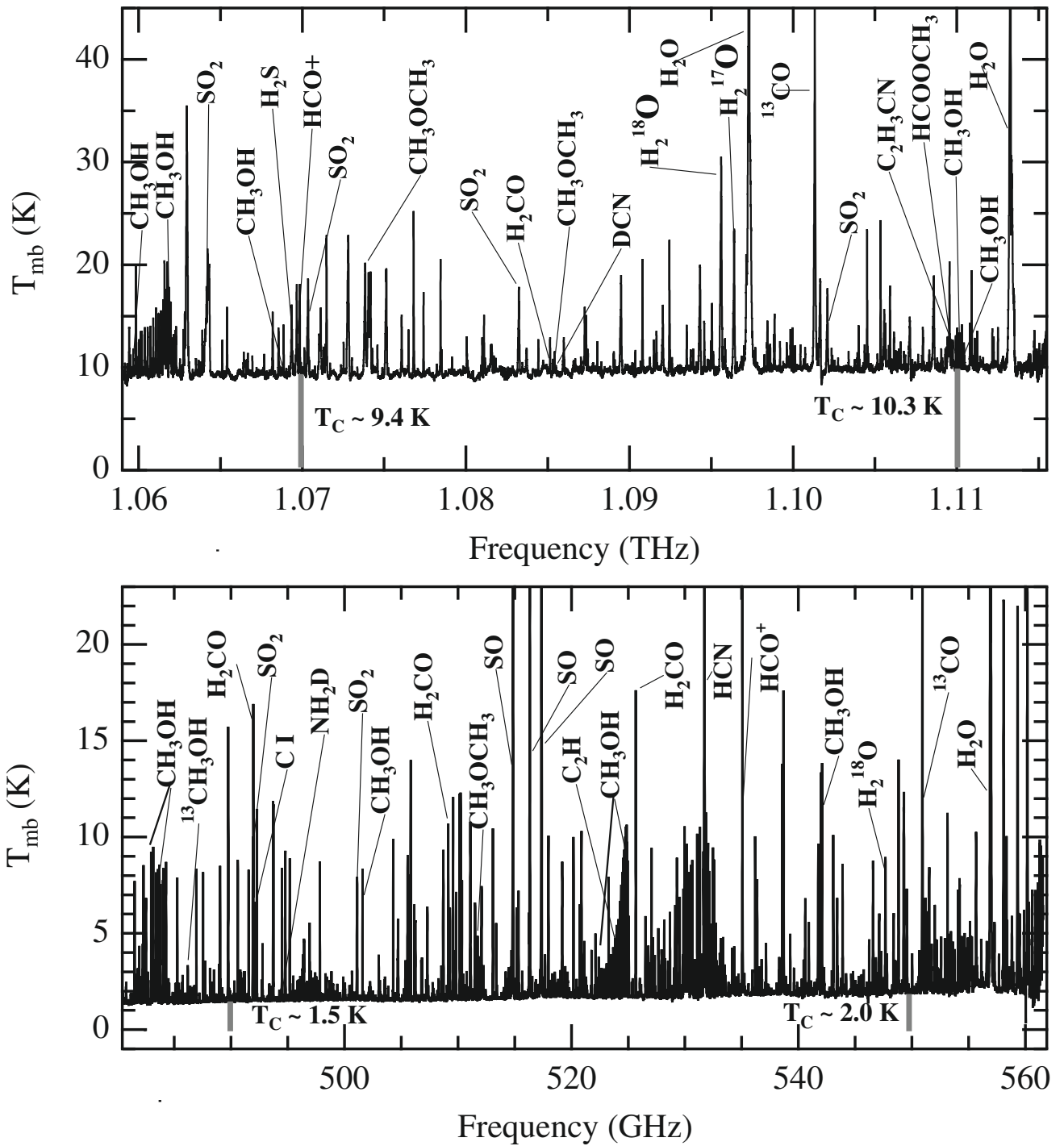
than estimated by Jacq et al. (1990) and Persson et al. (2007) (HDO/ $\text{H}_2\text{O} \sim 10^{-3}$ ); however, it is close to the ratio estimated by Persson et al. (2007) for the compact ridge ( $\sim 3 \times 10^{-2}$ ). A more definitive analysis will be performed using all the HDO and water lines. Regardless, the possible detection of HD $^{18}\text{O}$  hints that the D/H ratio of water in hot cores should be closely examined.

*Acknowledgements.* HIFI has been designed and built by a consortium of institutes and university departments from across Europe, Canada, and the United States under the leadership of SRON Netherlands Institute for Space Research, Groningen, The Netherlands, and with major contributions from Germany, France, and the US. Consortium members are: Canada: CSA, UWaterloo; France: CESR, LAB, LERMA, IRAM; Germany: KOSMA, MPIHR, MPS; Ireland: NUI Maynooth; Italy: ASI, IFSI-INAF, Osservatorio Astrofisico di Arcetri – INAF; Netherlands: SRON, TUD; Poland: CAMK, CBK; Spain: Observatorio Astronómico Nacional (IGN), Centro de Astrobiología (CSIC-INTA). Sweden: Chalmers University of Technology – MC2, RSS & GARD; Onsala Space Observatory; Swedish National Space Board, Stockholm University – Stockholm Observatory; Switzerland: ETH Zurich, FHNW; USA: Caltech, JPL, NHSC. The HEXOS team also is grateful to the HIFI instrument team for building a fantastic instrument. Support for this work was provided by NASA through an award issued by JPL/Caltech.

## References

- Belloche, A., Garrod, R. T., Müller, H. S. P., et al. 2009, A&A, 499, 215  
 Blake, G. A., Sutton, E. C., Masson, C. R., & Phillips, T. G. 1987, ApJ, 315, 621  
 Comito, C., & Schilke, P. 2002, A&A, 395, 357  
 Comito, C., Schilke, P., Phillips, T. G., et al. 2005, ApJS, 156, 127  
 Crockett, N. R., Bergin, E. A., Wang, S., et al. 2010, A&A, 521, L2  
 de Graauw, Th., Helmich, F. P., Phillips, T., et al. 2010, A&A, 518, L6  
 Dicker, S. R., Mason, B. S., Korgut, P. M., et al. 2009, ApJ, 705, 226  
 Ehrenfreund, P., & Charnley, S. B. 2000, ARA&A, 38, 427  
 Gensheimer, P. D., Mauersberger, R., & Wilson, T. L. 1996, A&A, 314, 281  
 Groesbeck, T. D. 1995, Ph.D. Thesis, Caltech  
 Herbst, E., & van Dishoeck, E. F. 2009, ARA&A, 47, 427  
 Jacq, T., Henkel, C., Walmsley, C. M., Jewell, P. R., & Baudry, A. 1988, A&A, 199, L5  
 Jacq, T., Walmsley, C. M., Henkel, C., et al. 1990, A&A, 228, 447  
 Lis, D. C., Serabyn, E., Keene, J., et al. 1998, ApJ, 509, 299  
 Lis, D. C., Phillips, T. G., Goldsmith, P. F., et al. 2010, A&A, 521, L26  
 Melnick, G. J., Tolls, V., Neufeld, D. A., et al. 2010, A&A, 521, L27  
 Millar, T. J., Bennett, A., & Herbst, E. 1989, ApJ, 340, 906  
 Müller, H. S. P., Thorwirth, S., Roth, D. A., & Winnewisser, G. 2001, A&A, 370, L49  
 Müller, H. S. P., Schlöder, F., Stutzki, J., & Winnewisser, G. 2005, J. Molecular Structure, 742, 215  
 Nummelin, A., Bergman, P., Hjalmarsen, Å., et al. 2000, ApJS, 128, 213  
 Pardo, J. R., Cernicharo, J., Herpin, F., et al. 2001, ApJ, 562, 799  
 Persson, C. M., Olofsson, A. O. H., Koning, N., et al. 2007, A&A, 476, 807  
 Phillips, T. G., Scoville, N. Z., Kwan, J., Huggins, P. J., & Wannier, P. G. 1978, ApJ, 222, L59  
 Pickett, H. M., Poynter, I. R. L., Cohen, E. A., et al. 1998, J. Quantitative Spectroscopy and Radiative Transfer, 60, 883  
 Pilbratt, G., Riedinger, J. R., Passvogel, T., et al. 2010, A&A, 518, L1  
 Sutton, E. C., Blake, G. A., Masson, C. R., & Phillips, T. G. 1984, ApJ, 283, L41  
 Tercero, B., Cernicharo, J., Pardo, J. R., & Goicoechea, J. R. 2010, A&A, 517, A96  
 van der Tak, F. F. S., Walmsley, C. M., Herpin, F., & Ceccarelli, C. 2006, A&A, 447, 1011  
 Wang, S., Bergin, E. A., Crockett, N. R., et al. 2010, A&A, submitted

- 
- <sup>1</sup> Department of Astronomy, University of Michigan, 500 Church Street, Ann Arbor, MI 48109, USA  
e-mail: ebergin@umich.edu
- <sup>2</sup> California Institute of Technology, Cahill Center for Astronomy and Astrophysics 301-17, Pasadena, CA 91125, USA
- <sup>3</sup> Max-Planck-Institut für Radioastronomie, Auf dem Hügel 69, 53121 Bonn, Germany
- <sup>4</sup> I. Physikalisches Institut, Universität zu Köln, Zùlpicher Str. 77, 50937 Köln, Germany
- <sup>5</sup> California Institute of Technology, Division of Geological and Planetary Sciences, MS 150-21, Pasadena, CA 91125, USA
- <sup>6</sup> Jet Propulsion Laboratory, Caltech, Pasadena, CA 91109, USA
- <sup>7</sup> Centre d'étude Spatiale des Rayonnements, Université de Toulouse [UPS], 31062 Toulouse Cedex 9, France
- <sup>8</sup> CNRS/INSU, UMR 5187, 9 avenue du Colonel Roche, 31028 Toulouse Cedex 4, France
- <sup>9</sup> LERMA & UMR8112 du CNRS, Observatoire de Paris, 61 Av. de l'Observatoire, 75014 Paris, France
- <sup>10</sup> Laboratoire d'Astrophysique de l'Observatoire de Grenoble, BP 53, 38041 Grenoble Cedex 9, France
- <sup>11</sup> Centro de Astrobiología (CSIC/INTA), Laboratorio de Astrofísica Molecular, Ctra. de Torrejón a Ajalvir, km 4, 28850 Torrejón de Ardoz, Madrid, Spain
- <sup>12</sup> LERMA, CNRS UMR8112, Observatoire de Paris and École Normale Supérieure, 24 rue Lhomond, 75231 Paris Cedex 05, France
- <sup>13</sup> SRON Netherlands Institute for Space Research, PO Box 800, 9700 AV, Groningen, The Netherlands
- <sup>14</sup> LPMAA, UMR7092, Université Pierre et Marie Curie, Paris, France
- <sup>15</sup> LUTH, UMR8102, Observatoire de Paris, Meudon, France
- <sup>16</sup> MPI für Sonnensystemforschung, 37191 Katlenburg-Lindau, Germany
- <sup>17</sup> Departments of Physics, Astronomy and Chemistry, Ohio State University, Columbus, OH 43210, USA
- <sup>18</sup> National Research Council Canada, Herzberg Institute of Astrophysics, 5071 West Saanich Road, Victoria, BC V9E 2E7, Canada
- <sup>19</sup> Infrared Processing and Analysis Center, California Institute of Technology, MS 100-22, Pasadena, CA 91125, USA
- <sup>20</sup> Canadian Institute for Theoretical Astrophysics, University of Toronto, 60 St George St, Toronto, ON M5S 3H8, Canada
- <sup>21</sup> Harvard-Smithsonian Center for Astrophysics, 60 Garden Street, Cambridge MA 02138, USA
- <sup>22</sup> National University of Ireland Maynooth, Ireland
- <sup>23</sup> Department of Physics and Astronomy, Johns Hopkins University, 3400 North Charles Street, Baltimore, MD 21218, USA
- <sup>24</sup> Department of Physics and Astronomy, University of Calgary, 2500 University Drive NW, Calgary, AB T2N 1N4, Canada
- <sup>25</sup> Leiden Observatory, Leiden University, PO Box 9513, 2300 RA Leiden, The Netherlands



**Fig. 2.** Larger version of Fig. 2. *Top:* HIFI spectral scan of Orion KL in Band 4b. *Bottom:* HIFI spectral scan of Orion KL in Band 1a. Strong lines in both spectra are identified. At the bottom of each panel we give the continuum level seen in the data at the ends of the bands. We made use of the myXCLASS program (<http://www.astro.uni-koeln.de/projects/schilke/XCLASS>) which accesses the CDMS (Müller et al. 2001, 2005, <http://www.cdms.de>) and JPL (Pickett et al. 1998, <http://spec.jpl.nasa.gov>) molecular data bases for line assignment.