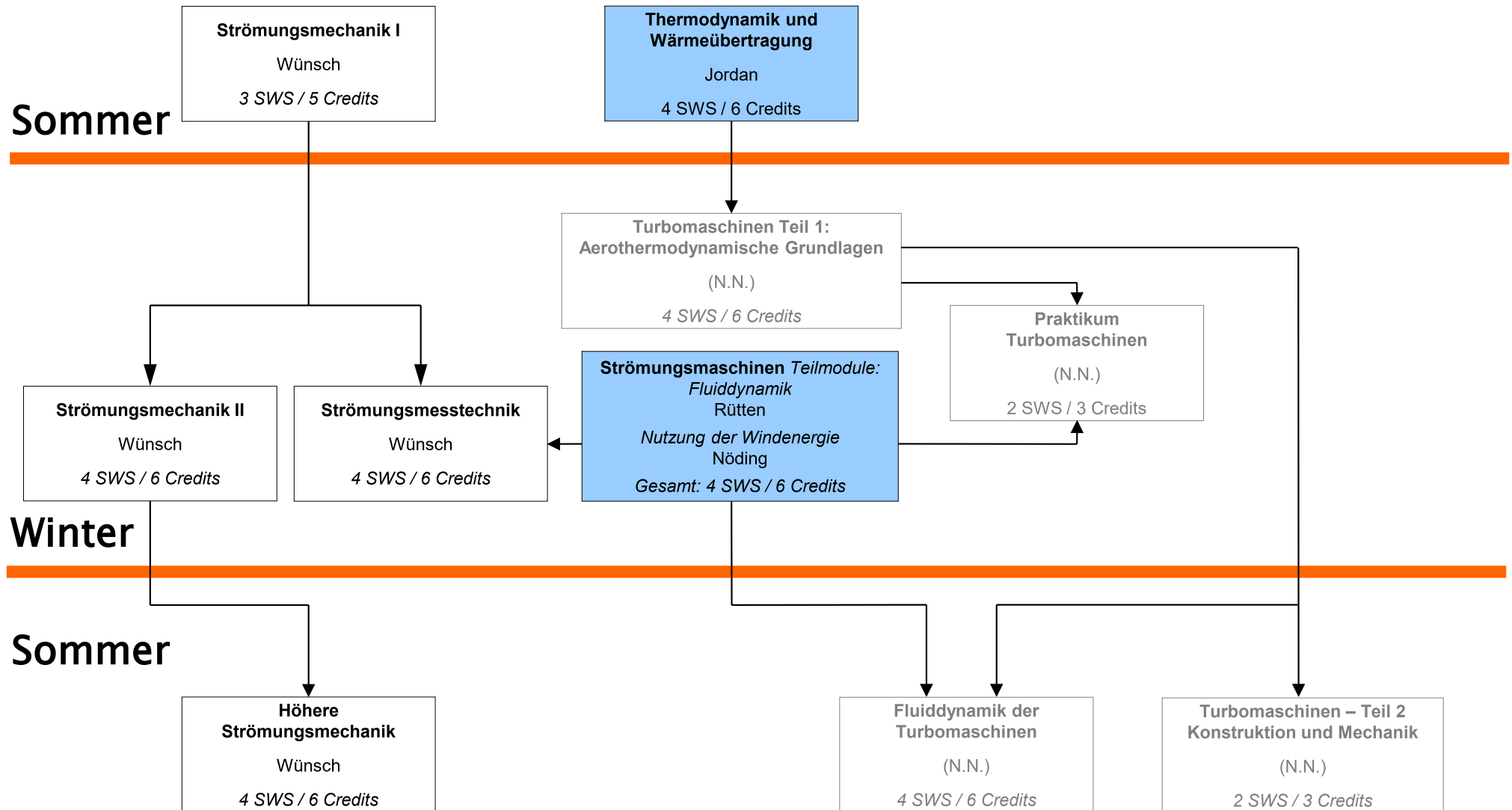


LV Wind- und Wasserkraft 1

Schwerpunkt: Grundlagen Maschinenbau



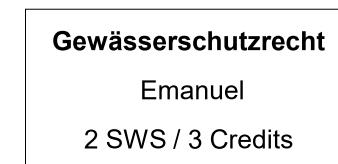
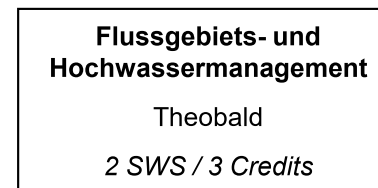
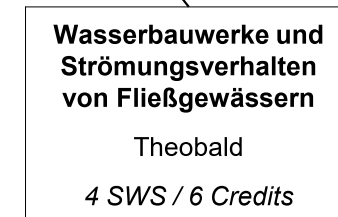
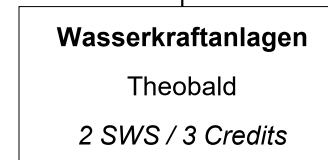
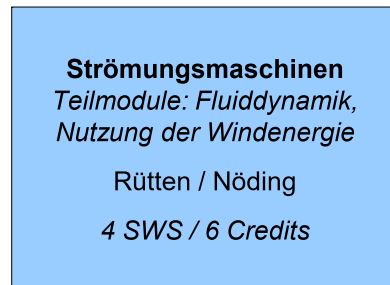
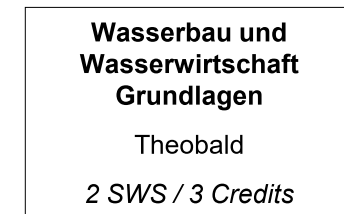
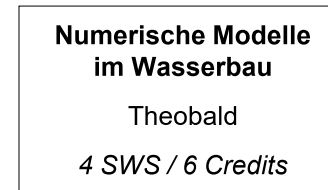
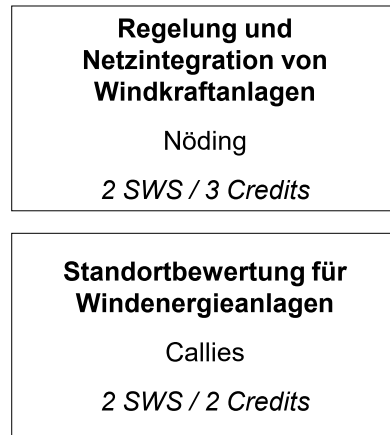
In Pfeilrichtung werden zunehmende mathematische Kenntnisse erwartet.

re²-Pflichtveranstaltung

Stand: 14.04.2025

Sommer

Winter



In Pfeilrichtung werden zunehmende mathematische Kenntnisse erwartet.